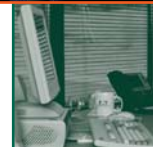
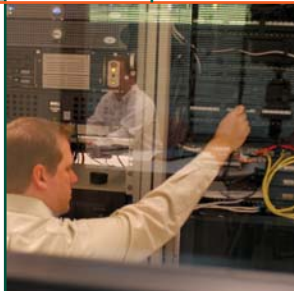


Business-based

Information Technology Solutions



THE GREENTREE GROUP

The Competitive Edge Solution®

Delivering innovative, leading-edge solutions for your organization

Today, many organizations are using IT systems that operate at less-than-optimum efficiency: mission-critical systems are frequently slow and

cumbersome; system components are regularly being redesigned or reconfigured; and vital information that resides in individual databases is often difficult to access and use.



Addressing these types of problems is essential, yet the focus must be on streamlining and improving operating efficiencies, driving down costs, eliminating process redundancies, etc. In other words, solving IT-related problems is not about the technology; it's about the business. Your business!

Greentree IT professionals can help you solve the business-based challenges that are often created by these types of IT problems. We can give you: a plan that is based on both your strategic and tactical needs; a rapid payback on incremental IT changes; a full range of leading-edge IT solutions; and skilled professionals who are eager to focus on your business-related IT challenges and needs.



Business-based architecture

Greentree IT professionals begin building a mission-centered architecture by asking key questions about your *business*. What processes are adversely affected by system problems? What are the benefits of streamlining these processes? How is the increasing pace of business change or technology impacting your organization? What type of information do system users require?

Using this systems-thinking point of view, we then develop an architectural model with several goals in mind: optimizing your IT systems and the business processes they support; providing a flexible, scalable design that simplifies future changes; minimizing your operational costs; and maximizing your return on investment.

Greentree architectural support services include:

- systems engineering
- CIO/CKO/CTO support
- IT portfolio management
- enterprise architectures



Data warehousing

Greentree offers a full range of integrated, enterprise-based data warehousing products and services, including: project managers and subject matter experts (SMEs) skilled in implementing successful DW solutions; technical DW skill sets, including certified NCR Teradata® Masters, Administrators, and Designers; NCR Teradata® system hardware and software; and business intelligence query tools.

Greentree is an exclusive reseller of NCR Teradata® hardware and software.



On-site and in-house IT services include: systems engineering and structured analysis; CIO, CTO, and CKO assistance; business intelligence; e-business strategies and rollout; database and internet design and maintenance; network continuity; systems integration; information security solutions; and computer forensics.

Focusing on mission-critical IT solutions

Greentree provides a broad range of business-based IT solutions

to clients in the DoD and in both the Public and private sectors. We bring a variety of leading-edge IT skills, yet we always stay focused on your mission, your strategic and operational goals, and the impact IT changes can have on your organization. We work hard to build and develop a business partnership with you, and to provide cost-effective IT-enabled solutions that have real-world value for your organization.

Enterprise metadata

“Metadata” describes the context, content, condition, quality, and other business characteristics of computer data. At Greentree, *enterprise* meta-

data is the term we use to describe utilizing the data about your data to achieve a well-defined model, or picture, of the mission of your *entire* business. Subsequently, we use what we have learned

to improve and simplify the way information is assembled, managed, moved, and used to accomplish the goals and objectives of your enterprise.

Greentree IT professionals—using a variety of proprietary metadata tools and techniques—can help you: simplify your informational environment; reduce redundancies; develop more complete and reliable data; and significantly close the gap between mission goals and current IT functionality.

Greentree leading-edge metadata support services include: data modeling; data administration; and enterprise metadata services.

Software engineering

Greentree IT professionals have extensive experience in developing, building, and integrating platform, network, client-server, and other software designs into mission-driven government and commercial systems.

We will work closely with you to design and deliver software solutions that provide a clear link to your core business strategies and optimize your technology investment.

Greentree software engineering support services include:

- software applications
- web-based development
- component-oriented products
- enterprise application integration
- data-based applications

Networking

Greentree IT professionals can help you and your organization develop functional, efficient, and secure intranet and internet infrastructures and/or connectivity. We design, integrate, and support these networking solutions so they enhance your current IT systems and will accommodate future changes. Most important of all, we bring your security level in line with your mission and/or business needs.

Greentree networking support services include: networked systems; telecommunications; network security; and information security.

As needed, we support the development of all Greentree IT solutions with complementary program management and financial management skill sets. These include: requirements analysis; logistics support; process reengineering; financial analysis; internal audit support; contract performance; and governance.

“Greentree has thought more about, and done more with, metadata services than most other IT service companies—large or small.”
— **Chief Technology Strategist,
Major IT Integrator**



Visit our exclusive Data Warehouse Center of Excellence and allow us to: demonstrate our extensive in-house expertise; take you through a targeted pilot demonstration of DW solutions; and/or assist you in finding a data warehousing solution that meets your specific business needs.





The Greentree Group

1360 Technology Court, Suite 100

Beavercreek, OH 45430

Phone: (937) 490-5500

Fax: (937) 490-5510

Email: information@greentreegroup.com

Web: www.greentreegroup.com



THE GREENTREE GROUP

The Competitive Edge Solution®