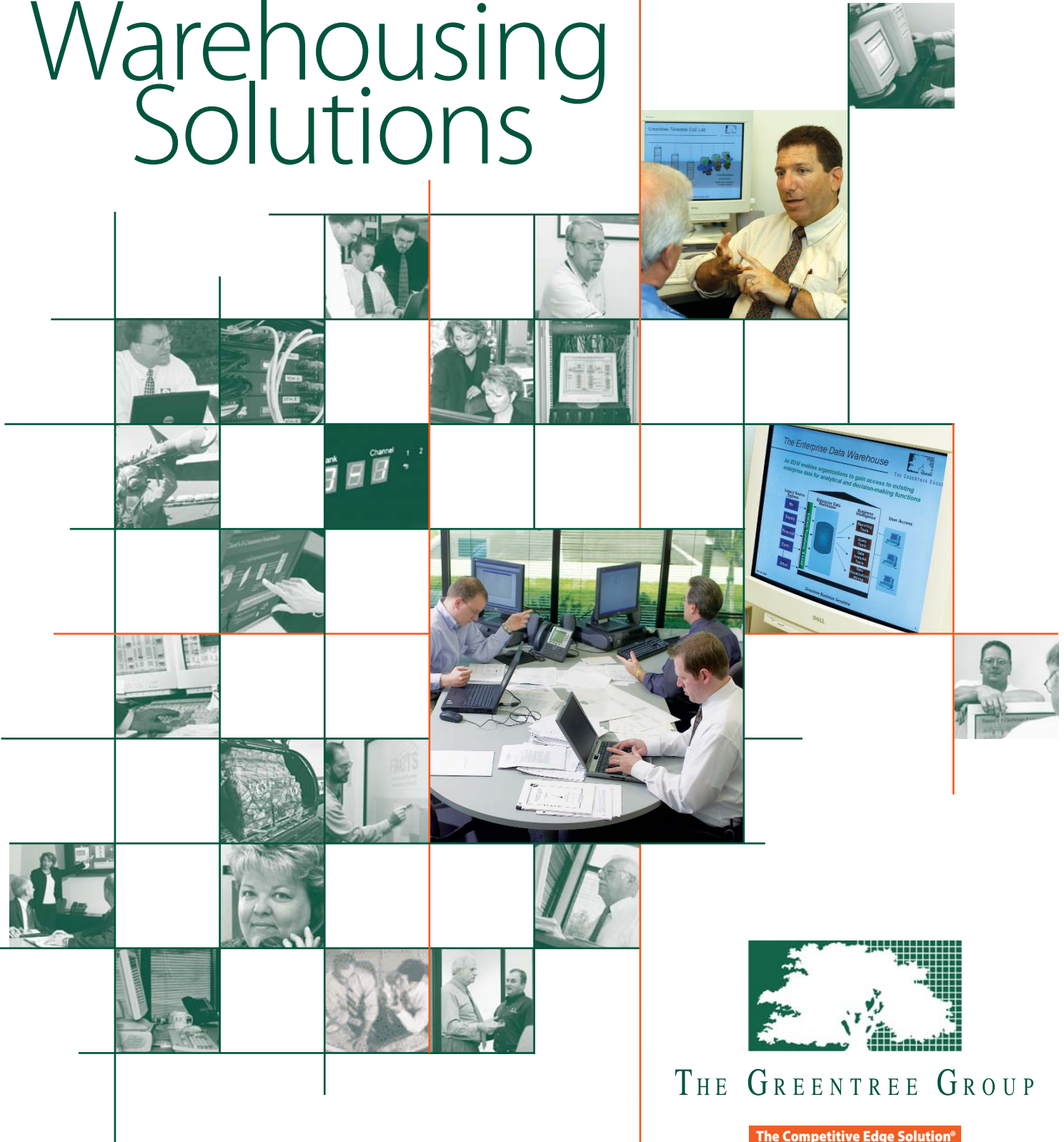


Integrated, Enterprise-based

Data Warehousing Solutions



THE GREENTREE GROUP

The Competitive Edge Solution®

Get an integrated, "end-to-end" view of your operation



Technology enablers are central in many organizations today because they give owners and managers more options and better methods for addressing

key business issues, including: streamlining and improving business processes; reducing or eliminating errors; responding more quickly to customer needs and wants; and gaining or maintaining that all-important competitive edge.

A modern day, high-performance data warehousing (DW) solution can be a key enabler for you and your organization. It gives you the ability to combine data from multiple databases into a single repository; it gives you an enterprise-based, "end-to-end" view of your operation; and, when properly designed, it allows you to integrate, access, and use this information more efficiently and effectively.

The Greentree Group can help you develop a state-of-the-art, cost-effective data warehousing solution for your organization. We can give you: a single, secure repository for sensitive information; selective accessibility to systems users; and the tools you need to utilize this data proactively to make better, faster, business decisions.

Consolidating and using enterprise-wide data

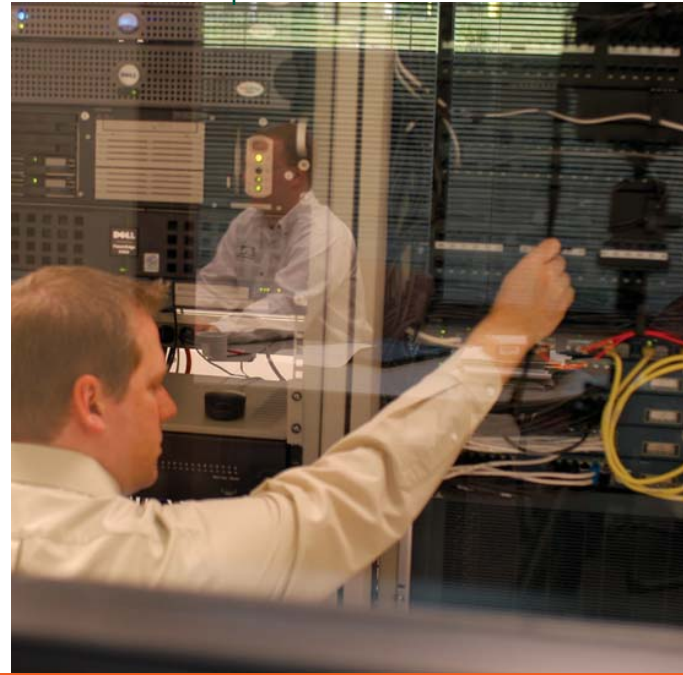
Good business decisions require good information about your operation. This information, however, must be current, complete, and represent an enterprise view of your *entire* organization to ensure that those decisions are accurate, strategic, and timely.

By consolidating data from separate, dissimilar databases into a single, centralized repository—by building a modern day, high-performance data warehouse—you have a cross-functional view of your information and more efficient tools to manage all aspects of your operation. From marketing to warehousing to supply chain management, an integrated, enterprise DW solution can allow you to operate more efficiently and effectively.

Predictive analyses—your competitive edge

In addition to streamlining, an end-to-end view of your operation can give you the ability to predict and/or anticipate the future. Using modern DW business intelligence query tools, you can obtain more strategic information about:

- internal movement/use of materials
- buying and selling habits of customers
- internal and external business/financial trends
- activities of vendors and other business partners



Greentree DW professionals can help you assess your organizational needs; develop a custom-designed, cost-effective DW solution to support your business strategies; implement that solution; and, equally important, support your system on an ongoing basis.

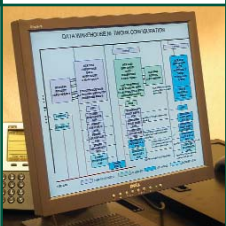
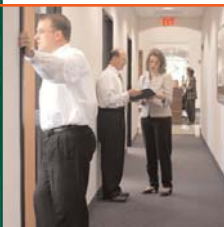


"Greentree is a valued business partner, as well as a rich source for qualified, certified Teradata skill sets."

**—John Grill, DoD Acct. Mgr.
NCR Teradata**

Cost-effective, best-of-breed data warehousing solutions

Visit Greentree's exclusive Data Warehouse Center of Excellence, and allow us to: demonstrate our extensive in-house DW expertise; take you through a targeted pilot demonstration of DW solutions; and/or assist you in exploring the use of data mining techniques and other powerful DW business intelligence tools.



Greentree can build, implement, and maintain a fully integrated data warehouse that brings all of your organization's data together into a single repository. The data contained in your warehouse—whether from sales, manufacturing, finance, vendor partners, etc.—can be mined, shared, and used throughout your enterprise.

Custom-designed DW solutions

Even though we have many leading-edge DW tools available to use (e.g., the NCR Teradata® Warehouse), we have no pre-conceived notions about what will work best for you. Our goal at Greentree is to provide you, our client, with a cost-effective, best-of-breed DW solution that meets your operational and business objectives. We do this by developing a *specific* data warehousing solution that is designed to meet your *specific* needs.

The Greentree approach

Greentree professionals work with you as your *business partners* to determine what solutions will best help you achieve your strategic goals, what systems will give you the greatest opportunity to meet your high-performance expectations, and what type of information you will need to achieve and/or maintain a competitive edge.

Greentree can help you develop a DW solution that is based on the business needs of your organization. We consider your operational challenges, look at your strategic goals, assess your competitive situation, and take

a careful look at your organization's culture. After we have identified a logical DW solution, we then evaluate the impact of that solution in terms of your growth objectives, current budget needs, and your projected return on investment.

Greentree offers a full range of DW products and services, including: project managers and/or subject matter experts skilled in rolling out successful DW solutions; technical DW skill sets, including certified NCR Teradata® Masters, Administrators, and Designers; NCR Teradata® system hardware and software; and business intelligence query tools.



As needed, we support the development of all Greentree DW solutions with complementary IT skill sets. These

include: architectures (e.g., systems engineering); enterprise metadata services (e.g., data modeling); and foundational software engineering and networking services (e.g., network security).

NCR Teradata®

The NCR Teradata® Warehouse is a powerful, complete DW solution that combines a high-performance parallel database technology, a full suite of data access and management tools, robust data mining capabilities, and world-class scalable hardware into a powerful DW solution that has a wide range of enterprise-based applications. Greentree and NCR work as partners in providing Teradata® solutions to Greentree clients.

Greentree is an exclusive reseller of NCR Teradata® hardware and software.



The Greentree Group

1360 Technology Court, Suite 100

Beavercreek, OH 45430

Phone: (937) 490-5500

Fax: (937) 490-5510

Email: information@greentreegroup.com

Web: www.greentreegroup.com



THE GREENTREE GROUP

The Competitive Edge Solution®